

### APPLICAZIONI

Elettropompe centrifughe multistadio ad asse verticale sviluppano una notevole pressione e nel contempo un' elevata portata d'acqua con un basso consumo di energia. Elettropompa universale per applicazioni civili ed industriali per impianti di lavaggio, ad alta pressione, per l'irrigazione, per l'agricoltura e per impianti sportivi.

### APPLICATION

Centrifugal vertical multistage water pumps able to develop high pressure and a high water lift with a comparatively low power consumption.

Universal pump for civil and industrial purposes, for high pressure system and for irrigation in agriculture and sports fittings.

### LIMITI D'IMPIEGO

- Pressione max. d'esercizio: 10 bar
- Temperatura liquido fino a 35°C
- Temperatura ambiente fino a 40°C
- Altezza d'aspirazione manometrica fino a 7 mt.
- Servizio continuo

### MOTORE

- Motore elettrico ad induzione a 2 poli ( $n = 2850 \text{ min}^{-1}$ )
- Isolamento Classe F
- Protezione IP 55

### MATERIALI

- Corpo pompa Ghisa
- Supporto motore Ghisa
- Girante Noryl
- Diffusore Noryl
- Camicia pompa Acciaio Inox
- Albero motore Acciaio Inox
- Tenute meccaniche Silicio/Silicio

### OPERATING CONDITIONS

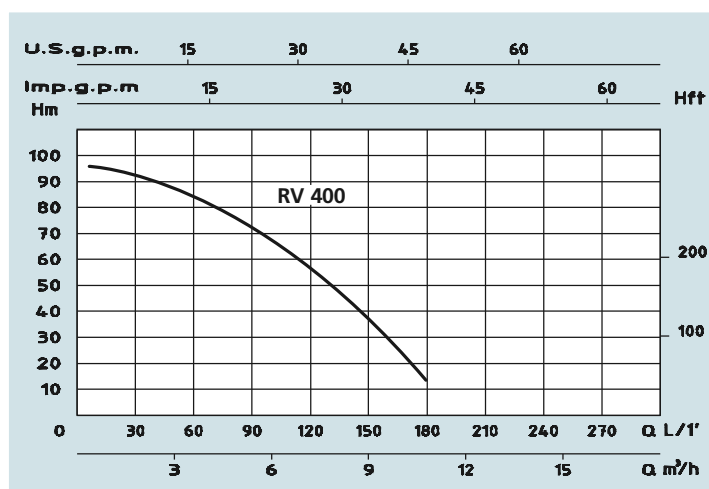
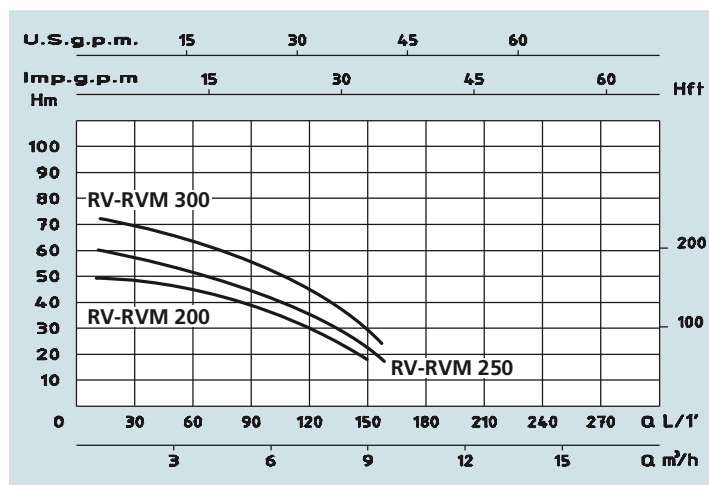
- Max working pressure: 10 bar
- Liquid temperature up to 35°C
- Ambient temperature up to 40°C
- Total suction lift up to 7 mt.
- Continuous duty

### MOTOR

- Two-Pole induction motor ( $n = 2850 \text{ min}^{-1}$ )
- Insulation Class F
- Protection IP 55

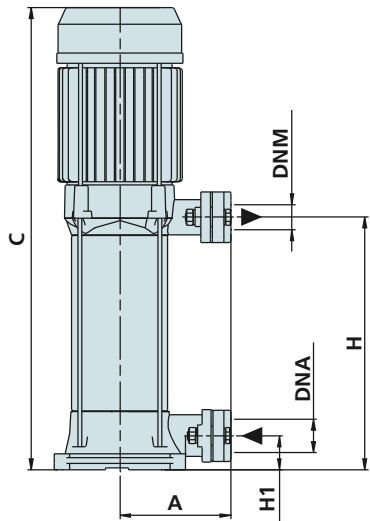
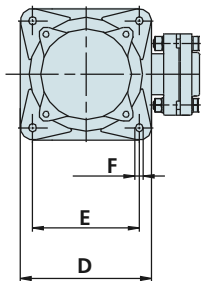
### MATERIALS

- Pump body Cast Iron
- Motor Support Cast Iron
- Impeller Noryl
- Diffuser Noryl
- Pump casing Stainless Steel
- Shaft with rotor Stainless Steel
- Mechanical seal Silicon/Silicon

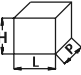


### DATI TECNICI - TECHNICAL DATA

TIPO - TYPE		POTENZA NOMINALE		POTENZA ASSORBITA	AMPERE		Q = PORTATA - CAPACITY										
Monofase Single-phase	Trifase Three-phase	NOMINAL POWER P2		INPUT POWER P1	Monofase Single-phase	Trifase Three-phase	m³/h	0	1,2	2,4	3,6	4,8	6	7,2	8,4	9,6	10,8
							lt/1	0	20	40	60	80	100	120	140	160	180
230V-50Hz	230/400V-50Hz	HP	kW	kW	1 x 230V	3 x 400V	Prevalenza manometrica totale in m.C.A. - Total head in meters w.c.										
RVM 200	RV 200	2	1,5	2	9,3	4,2	H (m)	50	48	45	43	39	35	30	23	15	
RVM 250	RV 250	2,5	1,85	2,2	10	4,6		60	57	54	52	47	41	34	25	18	
RVM 300	RV 300	3	2,2	2,7	12	5,3		73	68	66	64	57	49	41	32	22	
	RV 400	4	3	3,5		6,6		97	92	87	83	77	69	58	46	30	15



DIMENSIONI E PESI - DIMENSIONS AND WEIGHTS

TIPO - TYPE		DIMENSIONI mm - DIMENSIONS mm										DIMENSIONI DIMENSIONS mm 			Peso Weight
Monofase Single-phase	Trifase Three-phase	A	C	D	E	F	H	H1	Giranti Impellers	DNA	DNM	P	L	H	Kg
RVM 200	RV 200	156	525	181	147	11	239	41	4	1 1/4	1	240	610	270	26
RVM 250	RV 250	156	554	181	147	11	268	41	5	1 1/4	1	240	610	270	27
RVM 300	RV 300	156	583	181	147	11	297	41	6	1 1/4	1	240	610	270	28
	RV 400	156	641	181	147	11	355	41	8	1 1/4	1	240	680	300	32

## APPLICAZIONI

Elettropompe universali per applicazioni civili ed industriali, per impianti di lavaggio ad alta pressione, per l'irrigazione, l'agricoltura, impianti sportivi, per fontane e per movimentazione di liquidi moderatamente aggressivi privi di sostanze solide o abrasive.

## APPLICATION

Universal pumps for domestic or municipal water supply systems, for clean non-explosive liquids without solid or abrasive substances, for agricultural irrigation and sports application, for civil and industrial use, boiler feeding and condensate systems and for high pressure washing plants.

### LIMITI D'IMPIEGO

- Temperatura liquido da 0°C a 110°C
- Temperatura ambiente fino a 40°C
- Pressione max. d'esercizio 25 bar

### OPERATING CONDITIONS

- Temperature of liquid from 0°C to 110°C
- Ambient temperature max to 40°C
- Max. working pressure 25 bar

### MOTORE

- Motore elettrico ad induzione a (n = 2900 min<sup>-1</sup>) IM V1 (IEC 34-7)
- Isolamento Classe F
- Protezione IP 55

### MOTOR

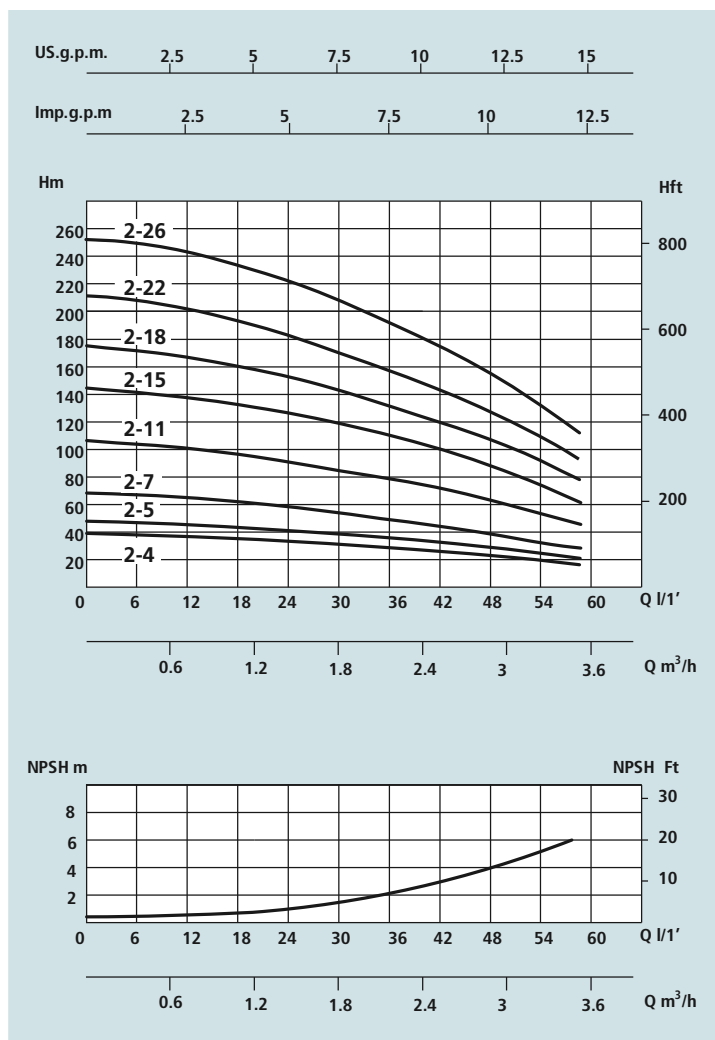
- Electric standard motor (n = 2900 min<sup>-1</sup>) IM V1 (IEC 34-7)
- Insulation Class F
- Protection IP 55

### MATERIALI

- Corpo aspirazione Acciaio Aisi 304
- Corpo mandata Acciaio Aisi 304
- Girante Acciaio Aisi 304
- Camicia pompa Acciaio Aisi 304
- Controflange Acciaio Aisi 304
- Coperchio superiore Acciaio Aisi 304
- Coperchio inferiore Acciaio Aisi 304
- Albero motore Acciaio Aisi 303
- Tenute meccaniche Grafite/Silicio

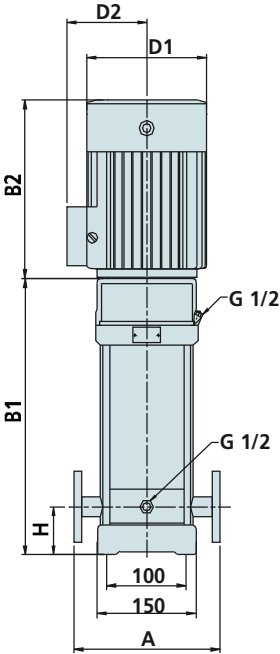
### MATERIALS

- Suction casing Stainless Steel Aisi 304
- Delivery casing Stainless Steel Aisi 304
- Impeller Stainless Steel Aisi 304
- External jacket Stainless Steel Aisi 304
- Counterflanges Stainless Steel Aisi 304
- Upper cover Stainless Steel Aisi 304
- Lower cover Stainless Steel Aisi 304
- Pump shaft Stainless Steel Aisi 303
- Mechanical seal Silicon/Graphite

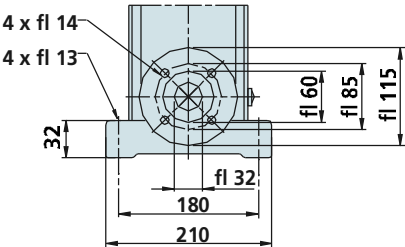


## DATI TECNICI - TECHNICAL DATA

TIPO - TYPE		POTENZA NOMINALE NOMINAL POWER P2		AMPERE		Q = PORTATA - CAPACITY									
Monofase Single-phase	Trifase Three-phase			Monofase Single-phase	Trifase Three-phase	m³/h	1	1,2	1,6	2	2,4	2,8	3,2	3,5	3,8
230V-50Hz	230/400V-50Hz	HP	kW	1 x 230V	3 x 400V	lt/1	16	20	26	33	40	46	53	58	63
VSM 2-4	VS 2-4	0,75	0,55	3,6	1,6	Prevalenza manometrica totale in m.C.A. - Total head in meters w.c.									
VSM 2-5	VS 2-5	0,75	0,55	3,6	1,6										
VSM 2-7	VS 2-7	1	0,75	4,4	2,2										
VSM 2-11	VS 2-11	1,5	1,1	6,9	3										
VSM 2-15	VS 2-15	2	1,5	9,1	4,2										
VSM 2-18	VS 2-18	3	2,2	12,4	5,3										
VSM 2-22	VS 2-22	3	2,2	12,4	5,3										
	VS 2-26	4	3		6,6										
						H (m)	36	35	33	30	26	24	20	16	
							45	43	40	37	33	30	24	20	
							63	61	57	52	47	41	35	28	
							98	95	89	82	73	64	54	44	
							134	130	123	112	100	90	73	60	
							161	157	148	136	121	108	91	76	
							197	192	180	165	148	130	110	90	
							232	228	214	198	179	158	130	110	



DN 25 1



DIMENSIONI E PESI - DIMENSIONS AND WEIGHTS

TIPO - TYPE		DIMENSIONI mm - DIMENSIONS mm								DIMENSIONI DIMENSIONS mm			Peso Weight
Monofase Single-phase	Trifase Three-phase	A	H	B1	B2	B1 + B2	D1	D2	Flangia Flange	P	L	H	Kg
VSM 2-4	VS 2-4	250	75	294	210	504	148	117	DN 25 1	300	750	300	34
VSM 2-5	VS 2-5	250	75	312	210	522	148	117	DN 25 1	300	750	300	35
VSM 2-7	VS 2-7	250	75	358	245	603	170	142	DN 25 1	300	750	300	40
VSM 2-11	VS 2-11	250	75	430	245	675	170	142	DN 25 1	300	750	300	41
VSM 2-15	VS 2-15	250	75	512	290	802	190	155	DN 25 1	350	950	350	48
VSM 2-18	VS 2-18	250	75	566	290	856	190	155	DN 25 1	350	950	350	55
VSM 2-22	VS 2-22	250	75	638	290	928	190	155	DN 25 1	350	1100	350	58
	VS 2-26	250	75	720	315	1035	197	165	DN 25 1	350	1100	350	65

## APPLICAZIONI

Elettropompe universali per applicazioni civili ed industriali, per impianti di lavaggio ad alta pressione, per l'irrigazione, l'agricoltura, impianti sportivi, per fontane e per movimentazione di liquidi moderatamente aggressivi privi di sostanze solide o abrasive.

## APPLICATION

Universal pumps for domestic or municipal water supply systems, for clean non-explosive liquids without solid or abrasive substances, for agricultural irrigation and sports application, for civil and industrial use, boiler feeding and condensate systems and for high pressure washing plants.

### LIMITI D'IMPIEGO

- Temperatura liquido da 0°C a 110°C
- Temperatura ambiente fino a 40°C
- Pressione max. d'esercizio 25 bar

### OPERATING CONDITIONS

- Temperature of liquid from 0°C to 110°C
- Ambient temperature max to 40°C
- Max. working pressure 25 bar

### MOTORE

- Motore elettrico ad induzione a (n = 2900 min<sup>-1</sup>) IM V1 (IEC 34-7)
- Isolamento Classe F
- Protezione IP 55

### MOTOR

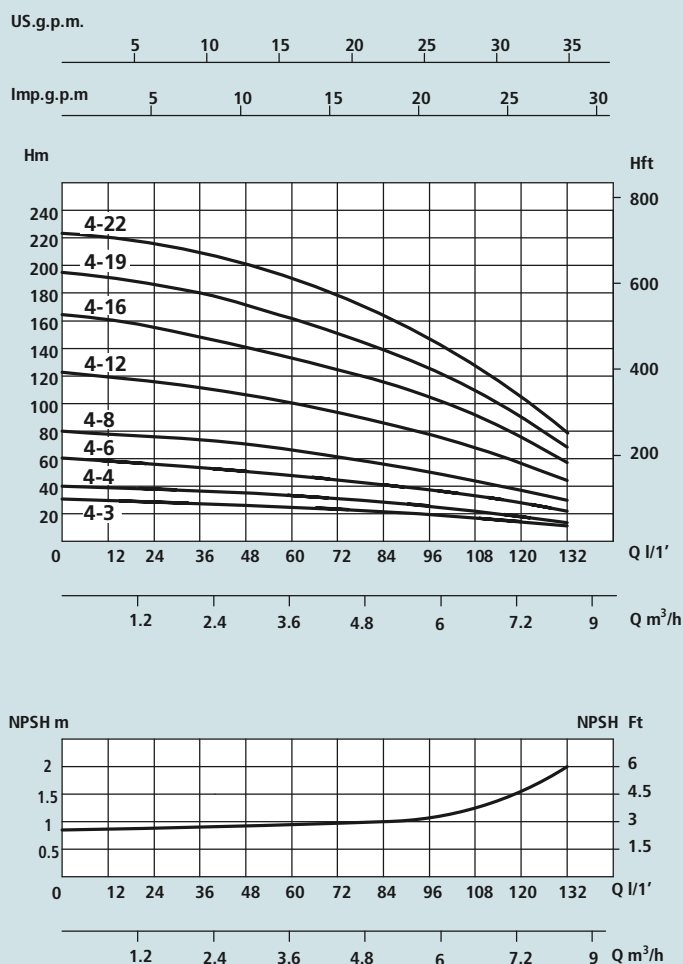
- Electric standard motor (n = 2900 min<sup>-1</sup>) IM V1 (IEC 34-7)
- Insulation Class F
- Protection IP 55

### MATERIALI

- Corpo aspirazione Acciaio Aisi 304
- Corpo mandata Acciaio Aisi 304
- Girante Acciaio Aisi 304
- Camicia pompa Acciaio Aisi 304
- Controflange Acciaio Aisi 304
- Coperchio superiore Acciaio Aisi 304
- Coperchio inferiore Acciaio Aisi 304
- Albero motore Acciaio Aisi 303
- Tenute meccaniche Grafite/Silicio

### MATERIALS

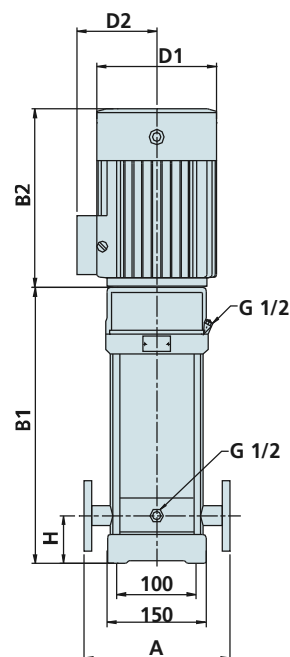
- Suction casing Stainless Steel Aisi 304
- Delivery casing Stainless Steel Aisi 304
- Impeller Stainless Steel Aisi 304
- External jacket Stainless Steel Aisi 304
- Counterflanges Stainless Steel Aisi 304
- Upper cover Stainless Steel Aisi 304
- Lower cover Stainless Steel Aisi 304
- Pump shaft Stainless Steel Aisi 303
- Mechanical seal Silicon/Graphite



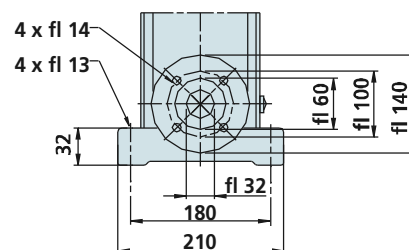
## DATI TECNICI - TECHNICAL DATA

TIPO - TYPE		POTENZA NOMINALE NOMINAL POWER P2		AMPERE		Q = PORTATA - CAPACITY								
Monofase Single-phase	Trifase Three-phase			Monofase Single-phase	Trifase Three-phase	m³/h	1,5	2	3	4	5	6	7	8
230V-50Hz	230/400V-50Hz	HP	kW	1 x 230V	3 x 400V	lt/1	25	33	50	66	83	100	116	133
VSM 4-3	VS 4-3	0,75	0,55	3,6	1,6	Prevalenza manometrica totale in m.C.A. - Total head in meters w.c.								
VSM 4-4	VS 4-4	1	0,75	4,4	2,2									
VSM 4-6	VS 4-6	1,5	1,1	6,9	3									
VSM 4-8	VS 4-8	2	1,5	9,1	4,2									
VSM 4-12	VS 4-12	3	2,2	12,4	5,3									
	VS 4-16	4	3		6,6									
	VS 4-19	5,5	4		9,4									
	VS 4-22	5,5	4		9,4									
						H (m)	28	27	26	24	20	18	13	10
							38	36	34	32	27	24	19	13
							56	54	52	48	41	37	28	20
							74	72	70	64	55	50	38	27
							114	108	104	95	85	75	58	41
							152	144	140	129	115	101	78	55
							183	171	168	153	137	122	93	67
							211	200	192	178	160	138	108	79

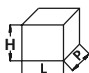




DN 32 1 1/4



## DIMENSIONI E PESI - DIMENSIONS AND WEIGHTS

TIPO - TYPE		DIMENSIONI mm - DIMENSIONS mm								DIMENSIONI DIMENSIONS mm 			Peso Weight
Monofase Single-phase	Trifase Three-phase	A	H	B1	B2	B1 + B2	D1	D2	Flangia Flange	P	L	H	Kg
VSM 4-3	VS 4-3	250	75	303	210	513	148	148	DN 32 1 1/4	300	750	300	35
VSM 4-4	VS 4-4	250	75	340	245	585	170	142	DN 32 1 1/4	300	750	300	39
VSM 4-6	VS 4-6	250	75	394	245	639	170	142	DN 32 1 1/4	300	750	300	41
VSM 4-8	VS 4-8	250	75	458	290	748	190	155	DN 32 1 1/4	350	950	350	51
VSM 4-12	VS 4-12	250	75	566	290	856	190	155	DN 32 1 1/4	350	950	350	61
	VS 4-16	250	75	684	315	999	197	165	DN 32 1 1/4	350	1100	350	65
	VS 4-19	250	75	765	335	1100	230	188	DN 32 1 1/4	400	1200	350	81
	VS 4-22	250	75	846	335	1181	230	188	DN 32 1 1/4	400	1200	350	82

## APPLICAZIONI

Elettropompe universali per applicazioni civili ed industriali, per impianti di lavaggio ad alta pressione, per l'irrigazione, l'agricoltura, impianti sportivi, per fontane e per movimentazione di liquidi moderatamente aggressivi privi di sostanze solide o abrasive.

## APPLICATION

Universal pumps for domestic or municipal water supply systems, for clean non-explosive liquids without solid or abrasive substances, for agricultural irrigation and sports application, for civil and industrial use, boiler feeding and condensate systems and for high pressure washing plants.

### LIMITI D'IMPIEGO

- Temperatura liquido da 0°C a 110°C
- Temperatura ambiente fino a 40°C
- Pressione max. d'esercizio 25 bar

### OPERATING CONDITIONS

- Temperature of liquid from 0°C to 110°C
- Ambient temperature max to 40°C
- Max. working pressure 25 bar

### MOTORE

- Motore elettrico ad induzione a (n = 2900 min<sup>-1</sup>) IM V1 (IEC 34-7)
- Isolamento Classe F
- Protezione IP 55

### MOTOR

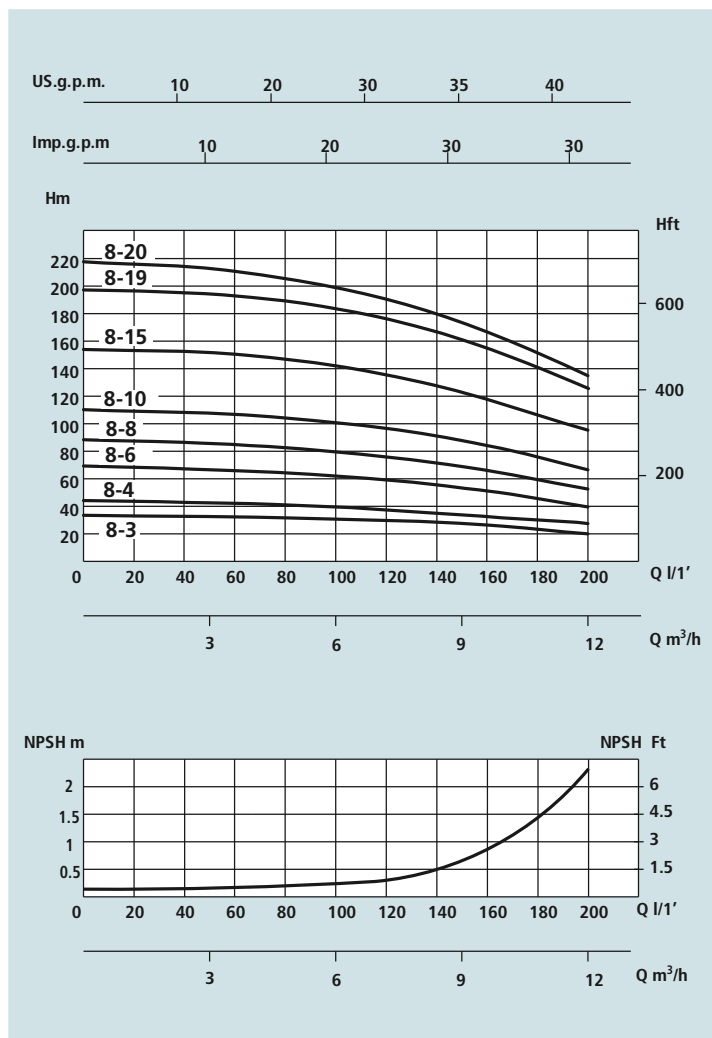
- Electric standard motor (n = 2900 min<sup>-1</sup>) IM V1 (IEC 34-7)
- Insulation Class F
- Protection IP 55

### MATERIALI

- Corpo aspirazione Acciaio Aisi 304
- Corpo mandata Acciaio Aisi 304
- Girante Acciaio Aisi 304
- Camicia pompa Acciaio Aisi 304
- Controflange Acciaio Aisi 304
- Coperchio superiore Acciaio Aisi 304
- Coperchio inferiore Acciaio Aisi 304
- Albero motore Acciaio Aisi 303
- Tenute meccaniche Grafite/Silicio

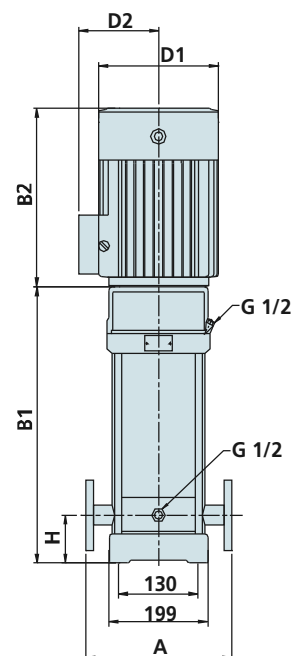
### MATERIALS

- Suction casing Stainless Steel Aisi 304
- Delivery casing Stainless Steel Aisi 304
- Impeller Stainless Steel Aisi 304
- External jacket Stainless Steel Aisi 304
- Counterflanges Stainless Steel Aisi 304
- Upper cover Stainless Steel Aisi 304
- Lower cover Stainless Steel Aisi 304
- Pump shaft Stainless Steel Aisi 303
- Mechanical seal Silicon/Graphite

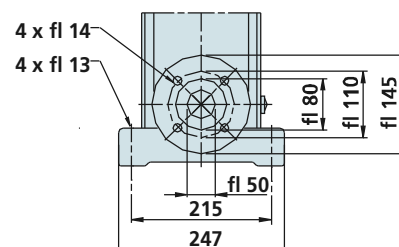


## DATI TECNICI - TECHNICAL DATA

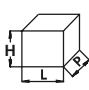
TIPO - TYPE		POTENZA NOMINALE NOMINAL POWER P2		AMPERE		Q = PORTATA - CAPACITY										
Monofase Single-phase	Trifase Three-phase			Monofase Single-phase	Trifase Three-phase	m³/h	5	6	7	8	9	10	11	12	13	
230V-50Hz	230/400V-50Hz	HP	kW	1 x 230V	3 x 400V	lt/1	83	100	116	133	150	166	183	200	216	
VSM 8-3	VS 8-3	1,5	1,1	6,9	3	Prevalenza manometrica totale in m.C.A. - Total head in meters w.c.										
VSM 8-4	VS 8-4	2	1,5	9,1	4,2											
VSM 8-6	VS 8-6	3	2,2	12,4	5,3											
	VS 8-8	4	3		6,6											
	VS 8-10	5,5	4		9,4											
	VS 8-15	7,5	5,5		12											
	VS 8-19	10	7,5		16											
	VS 8-20	10	7,5		16											



DN 40 1 1/2



## DIMENSIONI E PESI - DIMENSIONS AND WEIGHTS

TIPO - TYPE		DIMENSIONI mm - DIMENSIONS mm								DIMENSIONI DIMENSIONS mm 			Peso Weight Kg
Monofase Single-phase	Trifase Three-phase	A	H	B1	B2	B1 + B2	D1	D2	Flangia Flange	P	L	H	Kg
VSM 8-3	VS 8-3	280	80	377	245	622	170	142	DN 40 1 1/2	300	750	300	50
VSM 8-4	VS 8-4	280	80	417	290	707	190	155	DN 40 1 1/2	350	950	350	62
VSM 8-6	VS 8-6	280	80	477	290	767	190	155	DN 40 1 1/2	350	950	350	63
	VS 8-8	280	80	547	315	862	197	165	DN 40 1 1/2	350	1100	350	74
	VS 8-10	280	80	607	335	942	230	188	DN 40 1 1/2	400	1200	350	88
	VS 8-15	280	80	807	430	1237	260	208	DN 40 1 1/2	500	1500	400	120
	VS 8-19	280	80	867	430	1297	260	208	DN 40 1 1/2	500	1500	400	122
	VS 8-20	280	80	927	430	1357	260	208	DN 40 1 1/2	500	1500	400	124



## APPLICAZIONI

Elettropompe universali per applicazioni civili ed industriali, per impianti di lavaggio ad alta pressione, per l'irrigazione, l'agricoltura, impianti sportivi, per fontane e per movimentazione di liquidi moderatamente aggressivi privi di sostanze solide o abrasive.

## APPLICATION

Universal pumps for domestic or municipal water supply systems, for clean non-explosive liquids without solid or abrasive substances, for agricultural irrigation and sports application, for civil and industrial use, boiler feeding and condensate systems and for high pressure washing plants.

## LIMITI D'IMPIEGO

- Temperatura liquido da 0°C a 110°C
- Temperatura ambiente fino a 40°C
- Pressione max. d'esercizio 25 bar

## OPERATING CONDITIONS

- Temperature of liquid from 0°C to 110°C
- Ambient temperature max to 40°C
- Max. working pressure 25 bar

## MOTORE

- Motore elettrico ad induzione a (n = 2900 min<sup>-1</sup>) IM V1 (IEC 34-7)
- Isolamento Classe F
- Protezione IP 55

## MOTOR

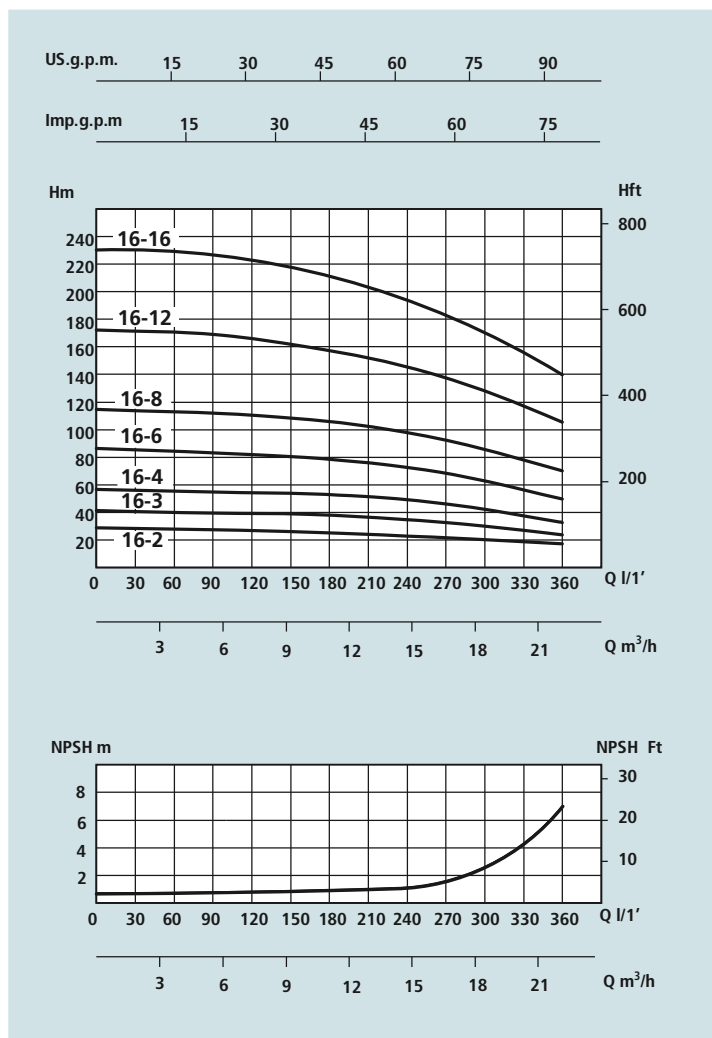
- Electric standard motor (n = 2900 min<sup>-1</sup>) IM V1 (IEC 34-7)
- Insulation Class F
- Protection IP 55

## MATERIALI

- Corpo aspirazione Acciaio Aisi 304
- Corpo mandata Acciaio Aisi 304
- Girante Acciaio Aisi 304
- Camicia pompa Acciaio Aisi 304
- Controflange Acciaio Aisi 304
- Coperchio superiore Acciaio Aisi 304
- Coperchio inferiore Acciaio Aisi 304
- Albero motore Acciaio Aisi 303
- Tenute meccaniche Grafite/Silicio

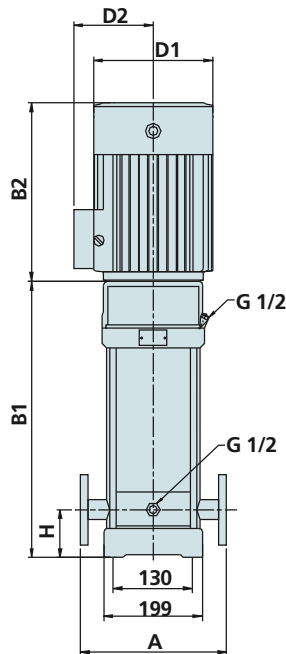
## MATERIALS

- Suction casing Stainless Steel Aisi 304
- Delivery casing Stainless Steel Aisi 304
- Impeller Stainless Steel Aisi 304
- External jacket Stainless Steel Aisi 304
- Counterflanges Stainless Steel Aisi 304
- Upper cover Stainless Steel Aisi 304
- Lower cover Stainless Steel Aisi 304
- Pump shaft Stainless Steel Aisi 303
- Mechanical seal Silicon/Graphite

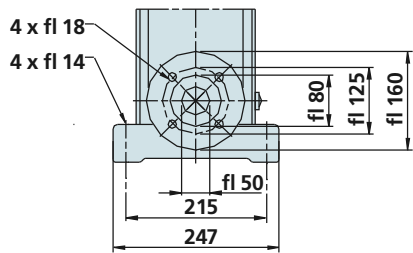


## DATI TECNICI - TECHNICAL DATA

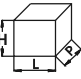
TIPO - TYPE		POTENZA NOMINALE  NOMINAL POWER  P2		AMPERE		Q = PORTATA - CAPACITY									
Monofase Single-phase	Trifase Three-phase			Monofase Single-phase	Trifase Three-phase	m³/h	8	10	12	14	16	18	20	22	24
						lt/1	133	166	200	233	266	300	333	366	400
230V-50Hz	230/400V-50Hz	HP	kW	1 x 230V	3 x 400V	Prevalenza manometrica totale in m.C.A. - Total head in meters w.c.									
VSM 16-2	VS 16-2	3	2,2	12,4	5,3	H (m)	27	26	25	24	22	21	19	16	
	VS 16-3	4	3		6,6		41	40	38	37	34	32	26	25	
	VS 16-4	5,5	4		9,4		54	53	52	49	46	43	38	34	
	VS 16-6	7,5	5,5		12		82	80	78	74	70	64	58	52	
	VS 16-8	10	7,5		16		110	108	104	99	94	86	77	70	
	VS 16-12	15	11		22		166	162	157	150	141	130	116	105	
	VS 16-16	20	15		30		222	217	210	200	189	174	156	140	



DN 50 2



DIMENSIONI E PESI - DIMENSIONS AND WEIGHTS

TIPO - TYPE		DIMENSIONI mm - DIMENSIONS mm								DIMENSIONI DIMENSIONS mm 			Peso Weight
Monofase Single-phase	Trifase Three-phase	A	H	B1	B2	B1 + B2	D1	D2	Flangia Flange	P	L	H	Kg
VSM 16-2	VS 16-2	300	90	397	290	687	190	155	DN 50 2	300	750	300	60
	VS 16-3	300	90	452	315	767	197	165	DN 50 2	350	950	350	75
	VS 16-4	300	90	497	335	832	230	188	DN 50 2	350	950	350	85
	VS 16-6	300	90	607	430	1037	260	208	DN 50 2	400	1200	350	110
	VS 16-8	300	90	697	430	1127	260	208	DN 50 2	400	1200	350	120
	VS 16-12	300	90	965	490	1455	330	255	DN 50 2	500	1500	400	205
	VS 16-16	300	90	1145	490	1635	330	255	DN 50 2	500	1700	400	238

## APPLICAZIONI

Elettropompe universali per applicazioni civili ed industriali, per impianti di lavaggio ad alta pressione, per l'irrigazione, l'agricoltura, impianti sportivi, per fontane e per movimentazione di liquidi moderatamente aggressivi privi di sostanze solide o abrasive.

## APPLICATION

Universal pumps for domestic or municipal water supply systems, for clean non-explosive liquids without solid or abrasive substances, for agricultural irrigation and sports application, for civil and industrial use, boiler feeding and condensate systems and for high pressure washing plants.

### LIMITI D'IMPIEGO

- Temperatura liquido da 0°C a 110°C
- Temperatura ambiente fino a 40°C
- Pressione max. d'esercizio 25 bar

### OPERATING CONDITIONS

- Temperature of liquid from 0°C to 110°C
- Ambient temperature max to 40°C
- Max. working pressure 25 bar

### MOTORE

- Motore elettrico ad induzione a (n = 2900 min<sup>-1</sup>) IM V1 (IEC 34-7)
- Isolamento Classe F
- Protezione IP 55

### MOTOR

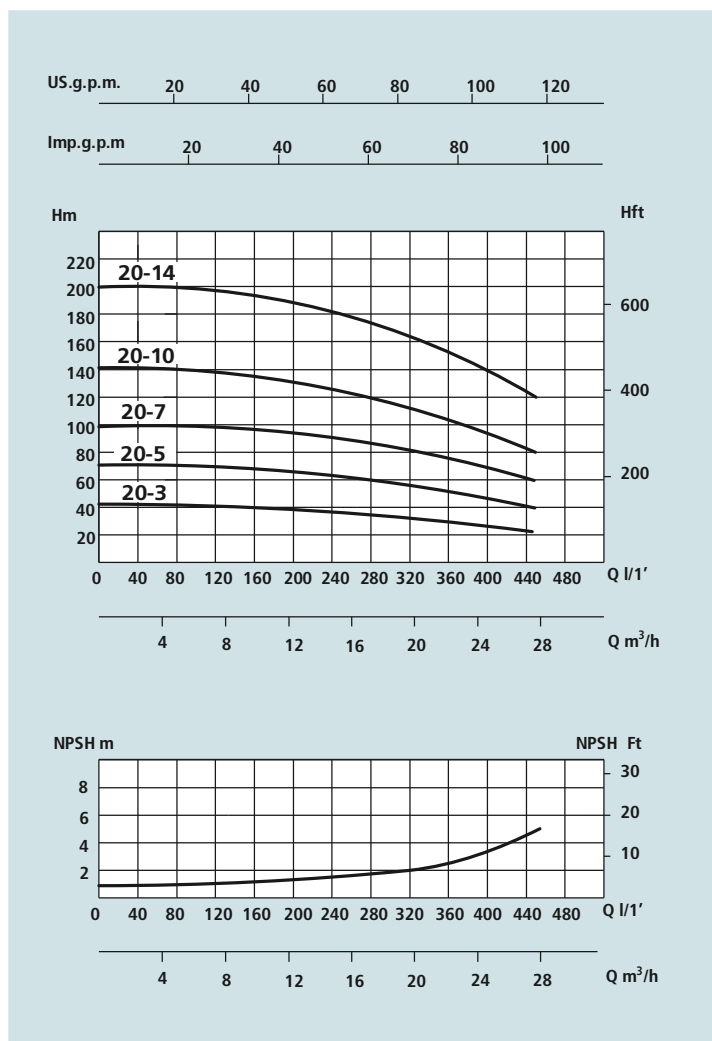
- Electric standard motor (n = 2900 min<sup>-1</sup>) IM V1 (IEC 34-7)
- Insulation Class F
- Protection IP 55

### MATERIALI

- Corpo aspirazione Acciaio Aisi 304
- Corpo mandata Acciaio Aisi 304
- Girante Acciaio Aisi 304
- Camicia pompa Acciaio Aisi 304
- Controflange Acciaio Aisi 304
- Coperchio superiore Acciaio Aisi 304
- Coperchio inferiore Acciaio Aisi 304
- Albero motore Acciaio Aisi 303
- Tenute meccaniche Grafite/Silicio

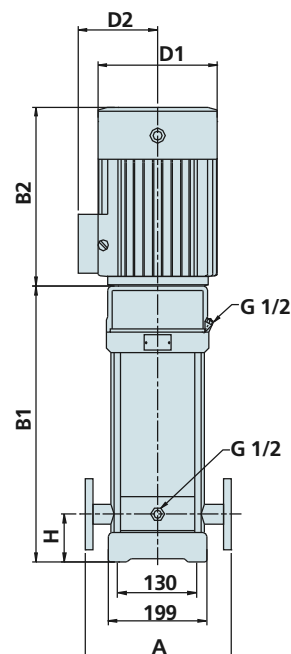
### MATERIALS

- Suction casing Stainless Steel Aisi 304
- Delivery casing Stainless Steel Aisi 304
- Impeller Stainless Steel Aisi 304
- External jacket Stainless Steel Aisi 304
- Counterflanges Stainless Steel Aisi 304
- Upper cover Stainless Steel Aisi 304
- Lower cover Stainless Steel Aisi 304
- Pump shaft Stainless Steel Aisi 303
- Mechanical seal Silicon/Graphite

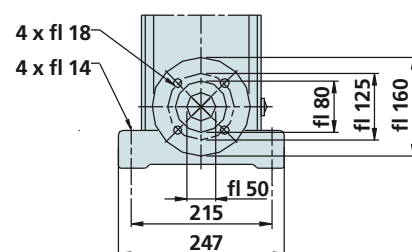


## DATI TECNICI - TECHNICAL DATA

TIPO - TYPE	POTENZA NOMINALE		AMPERE	Q = PORTATA - CAPACITY									
Trifase Three-phase	NOMINAL POWER P2		Trifase Three-phase	m³/h	10	12	14	16	20	22	24	26	28
	HP	kW		lt/1	166	200	233	266	333	366	400	433	466
230/400V-50Hz	HP	kW	3 x 400V	Prevalenza manometrica totale in m.C.A. - Total head in meters w.c.									
VS 20-3	5,5	4	9,4	H (m)	41	40	39	38	35	33	30	27	24
VS 20-5	7,5	5,5	12		67	66	64	62	58	55	50	45	40
VS 20-7	10	7,5	16		95	93	91	89	82	77	71	65	58
VS 20-10	15	11	22		136	134	131	128	118	111	103	95	85
VS 20-14	20	15	30		192	189	185	180	166	156	145	133	119



**DN 50 2**



## DIMENSIONI E PESI - DIMENSIONS AND WEIGHTS

TIPO - TYPE	DIMENSIONI mm - DIMENSIONS mm								DIMENSIONI DIMENSIONS mm			Peso Weight Kg
	A	H	B1	B2	B1 + B2	D1	D2	Flangia Flange	P	L	H	
Trifase Three-phase												
VS 20-3	300	90	452	335	787	230	188	DN 50 2	300	810	300	57
VS 20-5	300	90	562	430	992	260	208	DN 50 2	300	1020	300	74
VS 20-7	300	90	652	430	1082	260	208	DN 50 2	300	1150	300	84
VS 20-10	300	90	875	490	1365	330	255	DN 50 2	300	1390	300	145
VS 20-14	300	90	1055	490	1545	330	255	DN 50 2	300	1570	300	165

## APPLICAZIONI

Elettropompe universali per applicazioni civili ed industriali, per impianti di lavaggio ad alta pressione, per l'irrigazione, l'agricoltura, impianti sportivi, per fontane e per movimentazione di liquidi moderatamente aggressivi privi di sostanze solide o abrasive.

## APPLICATION

Universal pumps for domestic or municipal water supply systems, for clean non-explosive liquids without solid or abrasive substances, for agricultural irrigation and sports application, for civil and industrial use, boiler feeding and condensate systems and for high pressure washing plants.

## LIMITI D'IMPIEGO

- Temperatura liquido da 0°C a 110°C
- Temperatura ambiente fino a 40°C
- Pressione max. d'esercizio 25 bar

## OPERATING CONDITIONS

- Temperature of liquid from 0°C to 110°C
- Ambient temperature max to 40°C
- Max. working pressure 25 bar

## MOTORE

- Motore elettrico ad induzione a (n = 2900 min<sup>-1</sup>) IM V1 (IEC 34-7)
- Isolamento Classe F
- Protezione IP 55

## MOTOR

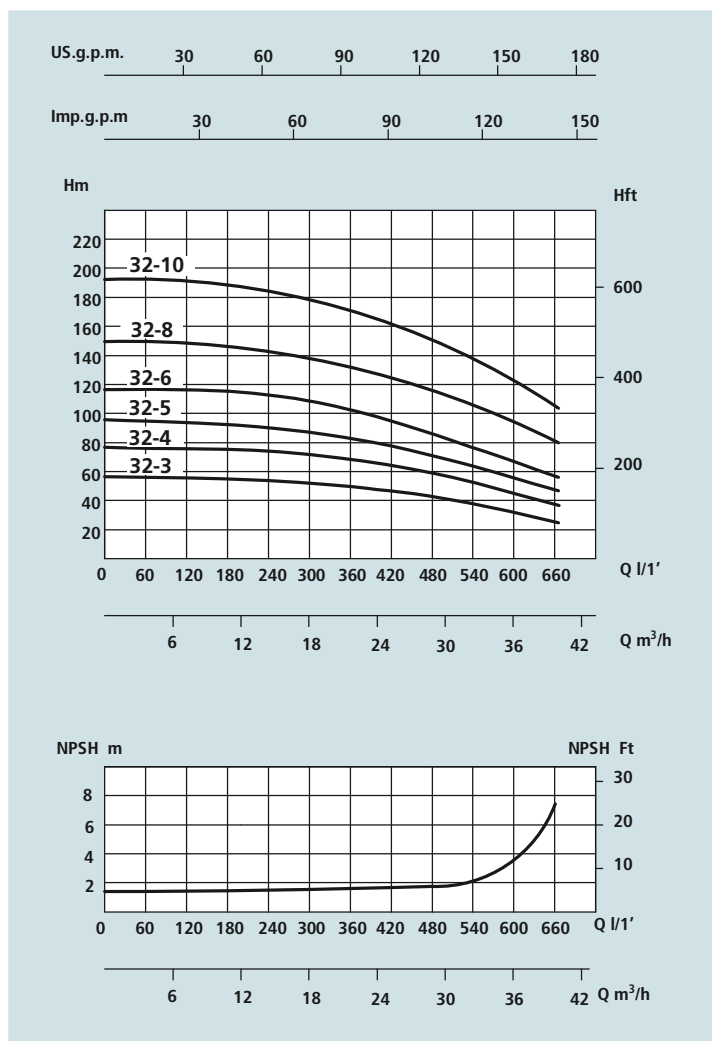
- Electric standard motor (n = 2900 min<sup>-1</sup>) IM V1 (IEC 34-7)
- Insulation Class F
- Protection IP 55

## MATERIALI

- Corpo aspirazione Acciaio Aisi 304
- Corpo mandata Acciaio Aisi 304
- Girante Acciaio Aisi 304
- Camicia pompa Acciaio Aisi 304
- Controflange Acciaio Aisi 304
- Coperchio superiore Acciaio Aisi 304
- Coperchio inferiore Acciaio Aisi 304
- Albero motore Acciaio Aisi 303
- Tenute meccaniche Grafite/Silicio

## MATERIALS

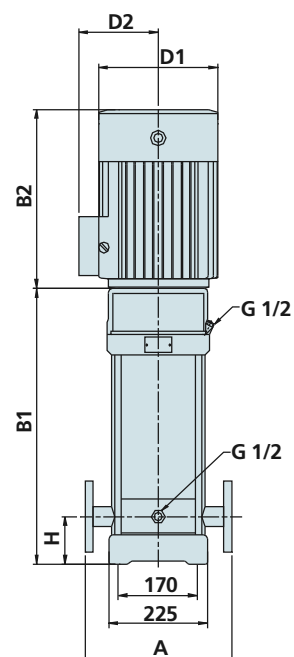
- Suction casing Stainless Steel Aisi 304
- Delivery casing Stainless Steel Aisi 304
- Impeller Stainless Steel Aisi 304
- External jacket Stainless Steel Aisi 304
- Counterflanges Stainless Steel Aisi 304
- Upper cover Stainless Steel Aisi 304
- Lower cover Stainless Steel Aisi 304
- Pump shaft Stainless Steel Aisi 303
- Mechanical seal Silicon/Graphite



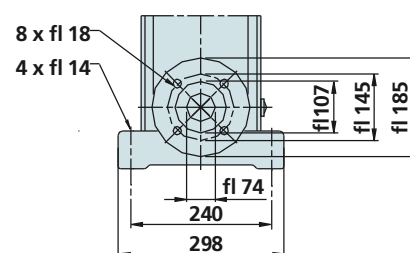
## DATI TECNICI - TECHNICAL DATA

TIPO - TYPE	POTENZA NOMINALE		AMPERE	Q = PORTATA - CAPACITY									
Trifase Three-phase	NOMINAL POWER P2		Trifase Three-phase	m³/h	16	18	20	24	28	32	36	40	44
				lt/1	266	300	333	400	466	573	600	666	733
230/400V-50Hz	HP	kW	3 x 400V	Prevalenza manometrica totale in m.C.A. - Total head in meters w.c.									
VS 32-3	7,5	5,5	12	H (m)	54	52	51	48	44	40	35	27	
VS 32-4	10	7,5	16		72	70	69	65	59	53	47	37	
VS 32-5	15	11	22		90	88	86	81	74	67	59	47	
VS 32-6	15	11	22		108	102	104	97	90	81	72	57	
VS 32-8	20	15	30		144	140	138	130	120	109	97	77	
VS 32-10	25	18,5	37		182	176	173	164	152	138	122	98	





DN 65 2 1/2



## DIMENSIONI E PESI - DIMENSIONS AND WEIGHTS

TIPO - TYPE	DIMENSIONI mm - DIMENSIONS mm								DIMENSIONI DIMENSIONS mm			Peso Weight Kg
	A	H	B1	B2	B1 + B2	D1	D2	Flangia Flange	P	L	H	
Trifase Three-phase												
VS 32-3	320	105	645	430	1075	260	208	DN 65 2 1/2	400	1200	350	140
VS 32-4	320	105	715	430	1145	260	208	DN 65 2 1/2	400	1200	350	150
VS 32-5	320	105	890	490	1380	330	255	DN 65 2 1/2	500	1500	400	220
VS 32-6	320	105	960	490	1450	330	255	DN 65 2 1/2	500	1500	400	230
VS 32-8	320	105	1100	490	1590	330	255	DN 65 2 1/2	500	1700	400	258
VS 32-10	320	105	1240	550	1790	330	255	DN 65 2 1/2	500	1900	400	290

## APPLICAZIONI

Elettropompe universali per applicazioni civili ed industriali, per impianti di lavaggio ad alta pressione, per l'irrigazione, l'agricoltura, impianti sportivi, per fontane e per movimentazione di liquidi moderatamente aggressivi privi di sostanze solide o abrasive.

## APPLICATION

Universal pumps for domestic or municipal water supply systems, for clean non-explosive liquids without solid or abrasive substances, for agricultural irrigation and sports application, for civil and industrial use, boiler feeding and condensate systems and for high pressure washing plants.

### LIMITI D'IMPIEGO

- Temperatura liquido da 0°C a 110°C
- Temperatura ambiente fino a 40°C
- Pressione max. d'esercizio 25 bar

### OPERATING CONDITIONS

- Temperature of liquid from 0°C to 110°C
- Ambient temperature max to 40°C
- Max. working pressure 25 bar

### MOTORE

- Motore elettrico ad induzione a (n = 2900 min<sup>-1</sup>) IM V1 (IEC 34-7)
- Isolamento Classe F
- Protezione IP 55

### MOTOR

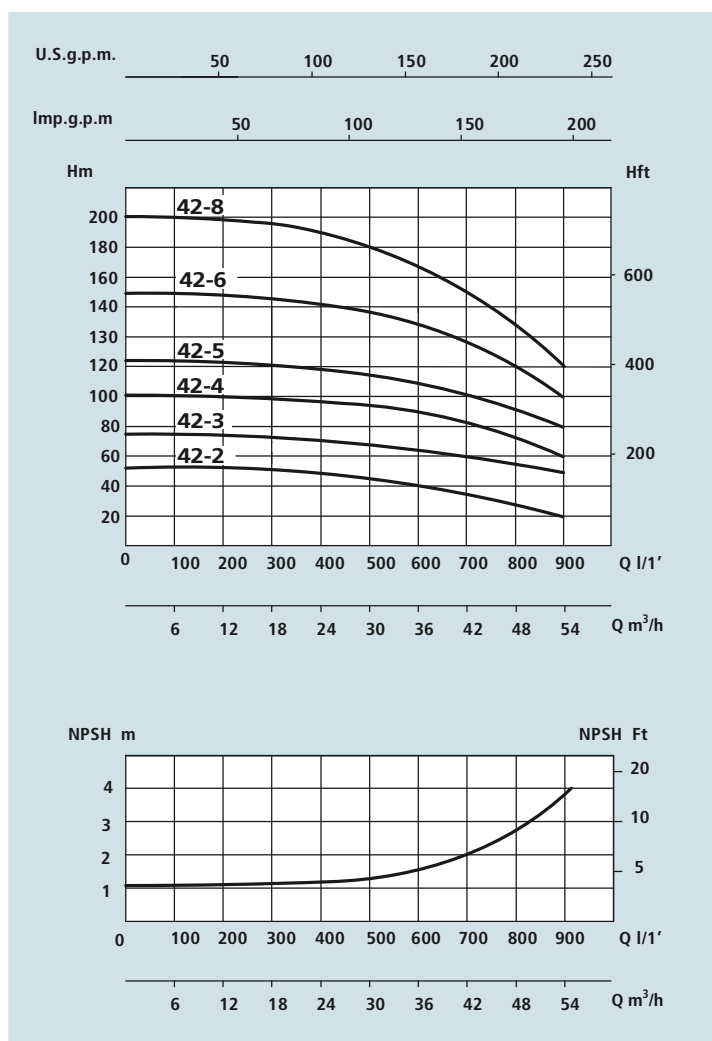
- Electric standard motor (n = 2900 min<sup>-1</sup>) IM V1 (IEC 34-7)
- Insulation Class F
- Protection IP 55

### MATERIALI

- Corpo aspirazione Acciaio Aisi 304
- Corpo mandata Acciaio Aisi 304
- Girante Acciaio Aisi 304
- Camicia pompa Acciaio Aisi 304
- Controflange Acciaio Aisi 304
- Coperchio superiore Acciaio Aisi 304
- Coperchio inferiore Acciaio Aisi 304
- Albero motore Acciaio Aisi 303
- Tenute meccaniche Grafite/Silicio

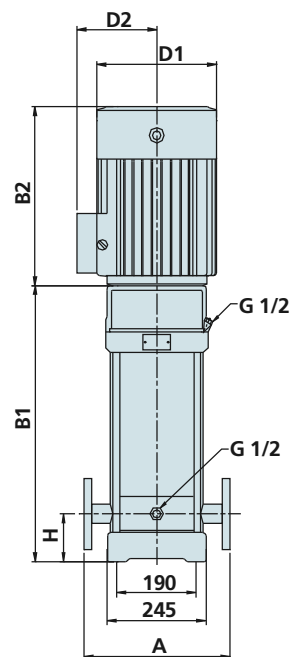
### MATERIALS

- Suction casing Stainless Steel Aisi 304
- Delivery casing Stainless Steel Aisi 304
- Impeller Stainless Steel Aisi 304
- External jacket Stainless Steel Aisi 304
- Counterflanges Stainless Steel Aisi 304
- Upper cover Stainless Steel Aisi 304
- Lower cover Stainless Steel Aisi 304
- Pump shaft Stainless Steel Aisi 303
- Mechanical seal Silicon/Graphite

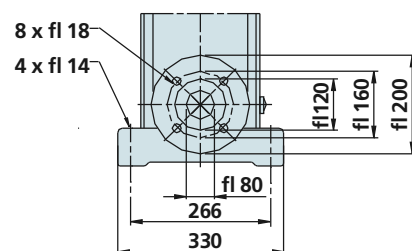


## DATI TECNICI - TECHNICAL DATA

TIPO - TYPE	POTENZA NOMINALE		AMPERE	Q = PORTATA - CAPACITY										
Trifase Three-phase	NOMINAL POWER P2		Trifase Three-phase	m³/h	25	30	35	40	42	45	50	55	60	
	HP	kW		lt/1	416	500	583	666	700	750	832	916	1000	
230/400V-50Hz			3 x 400V	Prevalenza manometrica totale in m.C.A. - Total head in meters w.c.										
VS 42-2	10	7,5	16	H (m)	48	46	44	42	41	39	35	31		
VS 42-3	15	11	22		71	69	66	63	61	58	53	47		
VS 42-4	20	15	30		95	92	88	84	81	78	71	62		
VS 42-5	25	18,5	37		119	115	110	105	101	97	88	78		
VS 42-6	30	22	45		143	138	132	125	122	116	106	93		
VS 42-8	40	30	62		190	184	176	167	162	154	141	124		



**DN 80 3**



## DIMENSIONI E PESI - DIMENSIONS AND WEIGHTS

TIPO - TYPE	DIMENSIONI mm - DIMENSIONS mm								DIMENSIONI DIMENSIONS mm			Peso Weight Kg
	A	H	B1	B2	B1 + B2	D1	D2	Flangia Flange	P	L	H	
Trifase Three-phase												
VS 42-2	365	140	641	430	1071	260	208	DN 80 3	400	1200	350	130
VS 42-3	365	140	826	490	1316	330	255	DN 80 3	500	1500	400	205
VS 42-4	365	140	906	490	1396	330	255	DN 80 3	500	1500	400	215
VS 42-5	365	140	986	550	1536	330	255	DN 80 3	500	1700	400	235
VS 42-6	365	140	1066	590	1656	360	285	DN 80 3	500	1700	400	274
VS 42-8	365	140	1226	660	1886	400	310	DN 80 3	500	1900	400	340

## APPLICAZIONI

Elettropompe universali per applicazioni civili ed industriali, per impianti di lavaggio ad alta pressione, per l'irrigazione, l'agricoltura, impianti sportivi, per fontane e per movimentazione di liquidi moderatamente aggressivi privi di sostanze solide o abrasive.

## APPLICATION

Universal pumps for domestic or municipal water supply systems, for clean non-explosive liquids without solid or abrasive substances, for agricultural irrigation and sports application, for civil and industrial use, boiler feeding and condensate systems and for high pressure washing plants.

### LIMITI D'IMPIEGO

- Temperatura liquido da 0°C a 110°C
- Temperatura ambiente fino a 40°C
- Pressione max. d'esercizio 25 bar

### OPERATING CONDITIONS

- Temperature of liquid from 0°C to 110°C
- Ambient temperature max to 40°C
- Max. working pressure 25 bar

### MOTORE

- Motore elettrico ad induzione a (n = 2900 min<sup>-1</sup>) IM V1 (IEC 34-7)
- Isolamento Classe F
- Protezione IP 55

### MOTOR

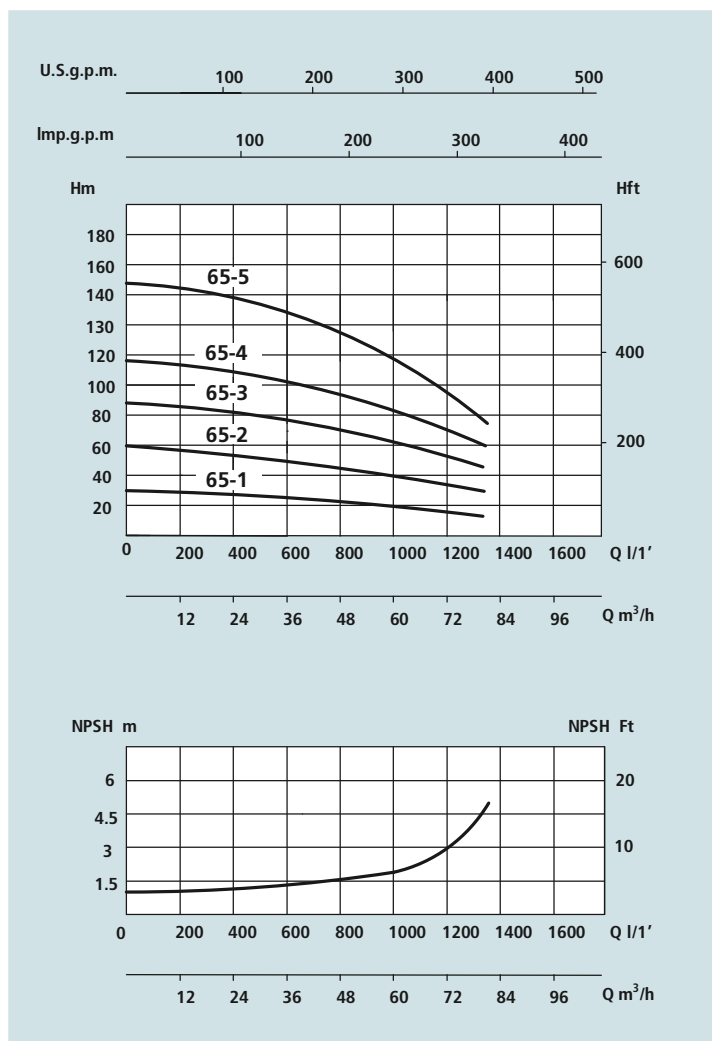
- Electric standard motor (n = 2900 min<sup>-1</sup>) IM V1 (IEC 34-7)
- Insulation Class F
- Protection IP 55

### MATERIALI

- Corpo aspirazione Acciaio Aisi 304
- Corpo mandata Acciaio Aisi 304
- Girante Acciaio Aisi 304
- Camicia pompa Acciaio Aisi 304
- Controflange Acciaio Aisi 304
- Coperchio superiore Acciaio Aisi 304
- Coperchio inferiore Acciaio Aisi 304
- Albero motore Acciaio Aisi 303
- Tenute meccaniche Grafite/Silicio

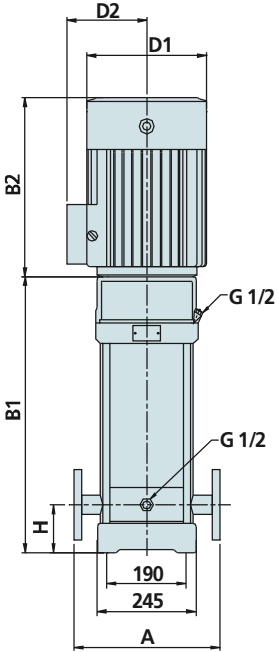
### MATERIALS

- Suction casing Stainless Steel Aisi 304
- Delivery casing Stainless Steel Aisi 304
- Impeller Stainless Steel Aisi 304
- External jacket Stainless Steel Aisi 304
- Counterflanges Stainless Steel Aisi 304
- Upper cover Stainless Steel Aisi 304
- Lower cover Stainless Steel Aisi 304
- Pump shaft Stainless Steel Aisi 303
- Mechanical seal Silicon/Graphite

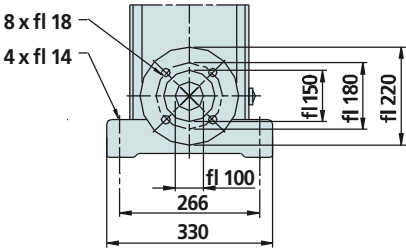


## DATI TECNICI - TECHNICAL DATA

TIPO - TYPE	POTENZA NOMINALE		AMPERE	Q = PORTATA - CAPACITY									
Trifase Three-phase	NOMINAL POWER P2		Trifase Three-phase	m³/h	30	40	50	60	65	70	80		
	HP	kW		lt/1	500	666	832	1000	1083	1166	1333		
230/400V-50Hz	HP	kW	3 x 400V	Prevalenza manometrica totale in m.C.A. - Total head in meters w.c.									
VS 65-1	7,5	5,5	12	H (m)	27	25	23	21	20	18	15		
VS 65-2	15	11	22		53	51	47	43	40	37	30		
VS 65-3	25	18,5	37		80	76	70	64	60	55	46		
VS 65-4	30	22	45		107	101	94	85	80	74	61		
VS 65-5	40	30	62		136	129	119	109	102	94	78		



DN 100 4



DIMENSIONI E PESI - DIMENSIONS AND WEIGHTS

TIPO - TYPE	DIMENSIONI mm - DIMENSIONS mm								DIMENSIONI DIMENSIONS mm			Peso Weight Kg
	A	H	B1	B2	B1 + B2	D1	D2	Flangia Flange	P	L	H	
Trifase Three-phase												
VS 65-1	365	140	561	430	991	260	208	DN 100 4	500	1100	400	110
VS 65-2	365	140	754	490	1244	330	255	DN 100 4	500	1280	400	155
VS 65-3	365	140	836	550	1386	330	255	DN 100 4	500	1420	400	205
VS 65-4	365	140	919	590	1509	360	285	DN 100 4	500	1550	400	260
VS 65-5	365	140	1001	660	1661	400	310	DN 100 4	500	1700	400	345